



ITT

BCPCV1 R5

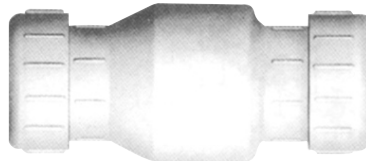
Wastewater

CentriPro

CHECK VALVES / FITTINGS

Cast Iron / Plastic Check Valves / Short Radius Elbows

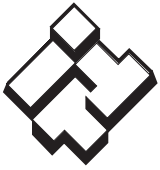
Effluent and Sewage



CentriPro is a brand of ITT Corporation.

www.centripro.com

Engineered for life

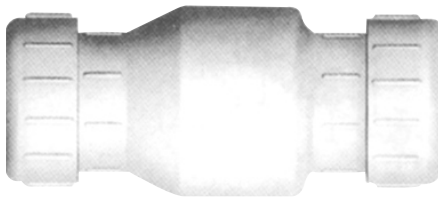


ITT

CENTRIPRO Wastewater

PLASTIC CHECK VALVES

- Ideal for horizontal installation.
- Compression seal connection for easy installation.
- Swing design flapper prevents clogging.
- Available for pipe size 1¼", 1½", 2", 3".
- 200 PSI burst rating.

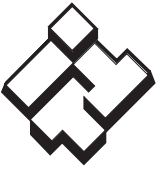


Pipe Size	Order No.
1¼"	A9-12P
1½"	A9-15P
2"	A9-2P
3"	A9-3P

RUBBER FLAPPER STYLE CHECK VALVE

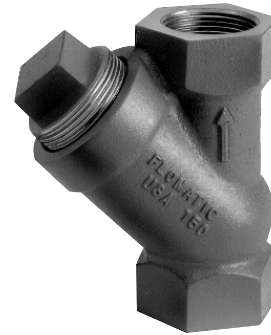


Pipe Size	Order No.
2" NPT	A9-2PH



BALL CHECK VALVES

- Ideal for vertical mounting.
- Heavy duty cast iron or plastic construction.
- Natural rubber ball.
- Clean-out port and plug.
- Available in 1¼", 1½", 2" and 3" NPT threaded connections.
- Also available in 4" flanged (125#).
- Recommended for flow velocity of 3' to 5' per second.
- Horizontal installation requires a 20' static head.

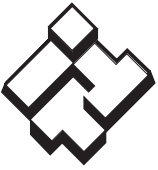


Plastic Models			
Pipe Size	Order No.	Maximum Pressure	Maximum Temperature
1¼" NPT	A9-12BPT	100 PSI	150° F
1½" NPT	A9-15BPT		
2" NPT	A9-2BPT		

Cast Iron Models			
Pipe Size	Order No.	Maximum Pressure	Maximum Temperature
1¼" NPT	A9-12B	150 PSI	180° F
1½" NPT	A9-15B		
2" NPT	A9-2B		
3" NPT	A9-3B		
4" Flanged	A9-4BCF ①		
4" Flanged	A9-4BCT ②		

① A9-4BCF – Nitrile covered metal ball, access (clean out) port.

② A9-4BCT – Phenolic ball, no access cover.



ITT

Wastewater

FITTINGS

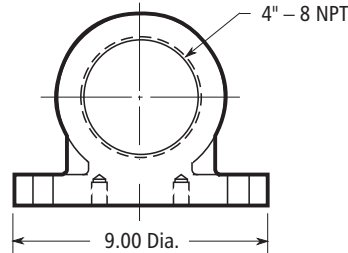
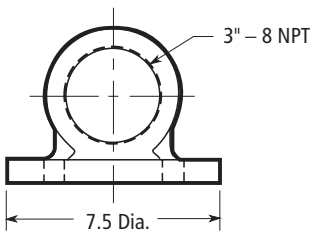
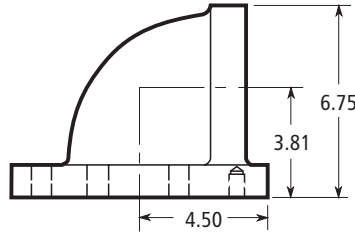
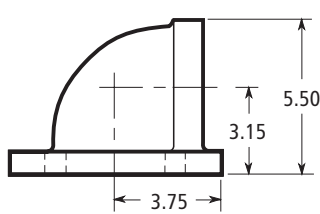
PIPE CONNECTORS

Short Radius Elbow

- Cast iron construction.
- 125 lb. ANSI rated flange at pump end.
- 3" NPT or 4" NPT threaded connection for discharge pipe.



Flange Size	Order Number	Used With
3"	A1-5	3", 125# ANSI Flange
4"	A1-6	4", 125# ANSI Flange



A1-5

A1-6



CentriPro and the ITT Engineered Blocks Symbol are registered trademarks and tradenames of ITT Corporation.

SPECIFICATIONS ARE SUBJECT TO CHANGE WITHOUT NOTICE.

BCPCV1 R5 December, 2007

© 2007 ITT Corporation

Engineered for life