

**Stainless Steel
Frame-Mounted Centrifugal Pumps**

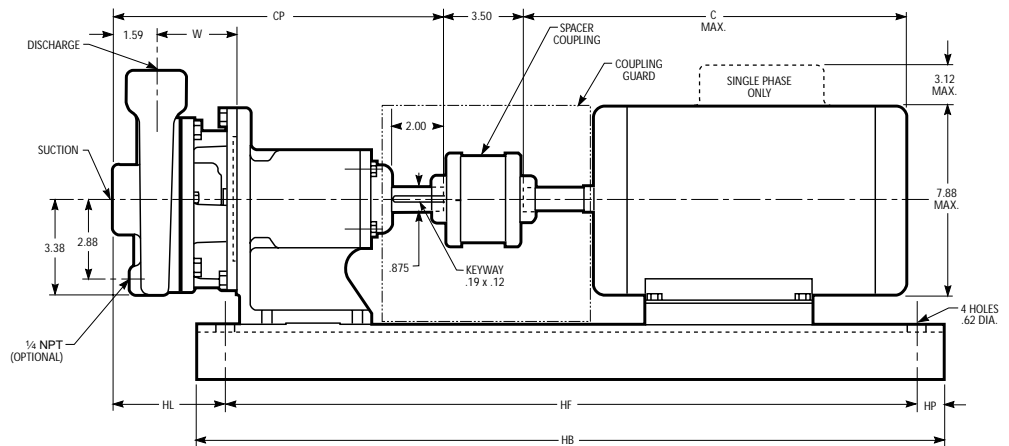
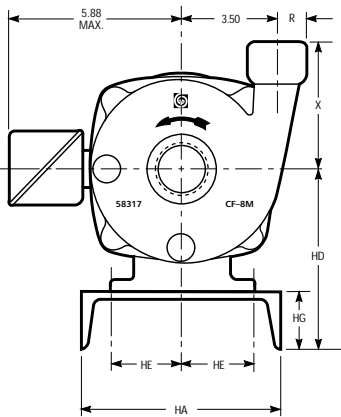
MODEL ICS-F
Effective April, 2002

ENGINEERING DATA

Channel Steel Bedplate	Installation Drawing No. 119-62	Certified for construction purposes <input type="checkbox"/> For Approval <input type="checkbox"/> For Record
Clockwise Rotation Viewed from Drive End		By _____

Signature _____

Date _____



WEIGHTS & DIMENSIONS – DETERMINED BY PUMP

Pump	Suct. NPT	Disch. NPT	CP	R	W	X	Wt. Max.	HL Frame		
								56	140	180
1 x 1 1/4-5	1 1/4	1	12.16	.94	3.01	4.62	38	5.73	3.85	
1 1/4 x 1 1/2-5	1 1/2	1 1/4	12.03	1.06	2.88	4.56	38	5.60	3.72	

NOTES:

- Pumps will be shipped with top vertical discharge as standard, for other orientations, remove casing bolts, rotate to desired position, and tighten 3/8" bolts to 24 lbs.-ft.
- Dimensions in inches, weight in pounds.
- Not to be used for construction purposes unless certified.
- Motor dimensions may vary with motor manufacturers.

AVAILABLE MOTOR AND BEDPLATE WEIGHTS & DIMENSIONS

Motor Frame	HA	HB	HD	HE	HF	HG	HP	Wt. Max.	Shims	Horsepower				Wt. Max.	C Max.
										3500 RPM					
										1 Phase		3 Phase			
										ODP	TEFC	ODP	TEFC		
56	8	26	6.87	3.12	22.38	2.38	1.00	30	1.00	1/2 - 1 1/2	1/2 - 1 1/2	1/2 - 1	1/2 - 1	45	13
143T										—	—	1 1/2	1 1/2	45	13.38
145T										2	2	2-3	2	52	14.25
182T	10		7.25	3.75	24	2.75	.88	43	—	3	3	5	3	63	16.62
184T		5								5	—	5	112	18.12	

Note: Dimensions in inches, weight in pounds.