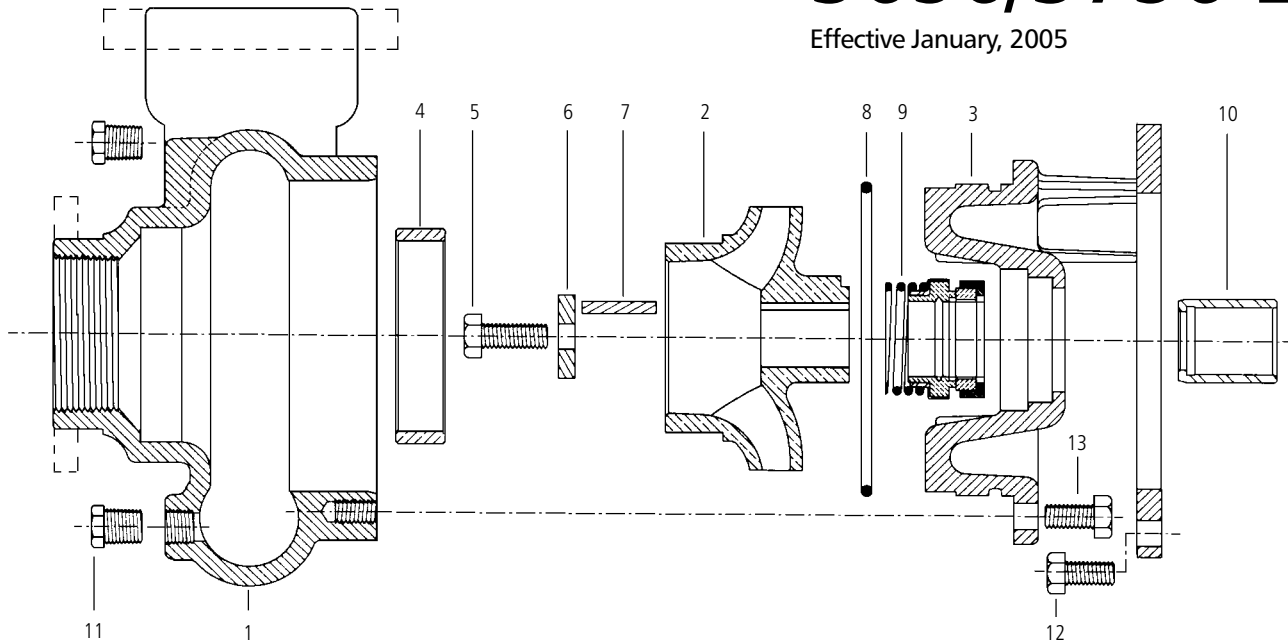


MODEL

3656/3756 LH

Effective January, 2005

- 2 x 2-5, 2½ x 2½-5 and 3 x 3-5 have NPT suction and discharge connections.
- 4 x 4-5 and 5 x 5-6 have flanged suction and discharge connections.



Item No.	Description	Material	2 x 2 – 5 Part No.	2½ x 2½ – 5 Part No.	3 x 3 – 5 Part No.	4 x 4 – 5 Part No.	5 x 5 – 6 Part No.	
1	Casing	Cast iron	1K306	1K307	1K308	1K475	1K476	
2	Impeller	Cast iron	2K534(4.0)	2K544(4.19)	2K563(4.38)	2K976 (4.81)	2K998 (5.50 x 4.50)	
		Bronze	2K535(4.0)	2K545(4.19)	2K564(4.38)	2K981 (4.81)	2K999 (5.50 x 4.50)	
		Cast iron	2K536(3.75)	2K546(3.94)	2K565(4.19)	2K982 (4.62)	2K990 (5.31 x 4.31)	
		Bronze	2K537(3.75)	2K547(3.94)	2K566(4.19)	2K983 (4.62)	2K991 (5.31 x 4.31)	
		Cast iron	2K538(3.5)	2K548(3.75)	2K567(4.00)	2K984 (4.50)	2K992 (5 x 3.88)	
		Bronze	2K539(3.5)	2K549(3.75)	2K568(4.00)	2K985 (4.50)	2K993 (5 x 3.88)	
		Cast Iron	2K540(3.25)	2K550(3.56)	2K569(3.81)	2K986 (4.19)	2K994 (5 x 3.56)	
		Bronze	2K541(3.25)	2K551(3.56)	2K570(3.81)	2K987 (4.19)	2K995 (5 x 3.56)	
		Cast iron	2K542(3.0)	2K552(3.38)	2K571(3.62)	2K988 (4.00)	2K996 (5 x 3.03)	
3	Motor adapter	140-180 Frame	Cast iron				1K309	1K110
		210TCZ Frame 210 Frame						1K112
4	Casing wear ring	Brass	4K268		4K70	4K266	4K627	
		Cast iron	4K267		4K69	4K265	4K638	
5	Impeller bolt	304 SS					13K43	
6	Impeller washer	304 SS				13K133	13L39	
7	Key	304 SS					4K11	
8	O-ring	BUNA					5K235	5K73
		Viton					5K236	5K207
		EPR					5K315	5K194
9	Standard seal						10K13	
	Hi-temp seal						10K19	
	Viton seal						10K27	
	Abrasive seal						10K64	
10	Shaft sleeve	304 SS					4K66	
11	¼" pipe plug	Cast iron					6K2	
12	Hex head screw - MA	Steel-zinc plated					13K69	13K69 (140-180) 13K93 (210)
13	Hex head screw - casing						13K69	