

Series: NPE-F
Size: 1½ x 2-6
Description: 316 SS Frame-Mounted End Suction Pump

Job or Customer: _____	Representative: _____
Engineer: _____	Order Number: _____ Date: _____
Contractor: _____	Submitted By: _____ Date: _____
Reference: _____	Approved By: _____ Date: _____

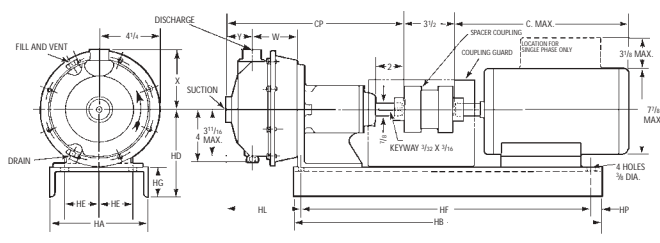
Pump Design Data:	Motor Design Data:
Quantity: _____ Tag: _____	HP: _____ RPM: _____
Capacity (GPM): _____ Head (ft.): _____	Frame: _____ Enclosure: _____
Liquids: _____	Volts: _____ Hertz: _____ phase: _____
Temperature: _____ Sp. Gr.: _____	Suction Size: 2" Type: NPT

Maximum Working Pressure: 125 PSIG	Discharge Size: 1½" Type: NPT
------------------------------------	-------------------------------

Maximum Working Temperature: 212° F Standard	Mechanical Seal Options
--	--------------------------------

Maximum Suction Pressure: 60 PSIG	
-----------------------------------	--

Rotary	Stationary	Elastomers	Metal	Duty
Carbon	Silicon Carbide	EPR	316 SS	Temp. to 250° Ozone, Mild Caustic
		Viton		Glycol, Mild Chem.
Silicon Carbide	EPR	Mild Caustics and Ozone Carbon Free		
	Viton	Abrasives and Chemicals, Carbon Free		

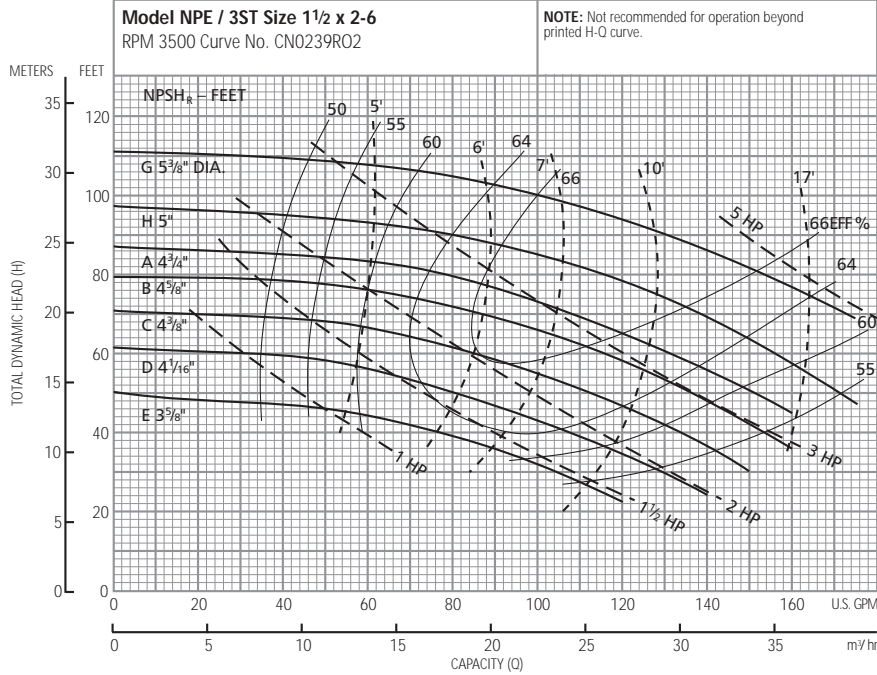


Materials of Construction:	Casing: 316 Stainless Steel
Impeller: 316 Stainless Steel	Wear Ring: EPR/Viton
Shaft: 316 Stainless Steel	Sleeve: N/A
Adapter: 316 Stainless Steel	O-Rings: EPR/Viton

Dimensions

HP	RPM	FRM	CP	C MAX	HL	X	Y	L	HA	HB	HD	HE	HF	HG	HD	W	Max. Wt.
½	1750	56	13½	13	5⅛	4⅝	2⅞	7	8	26	6⅞	3⅛	22⅜	2⅝	1	3¾	98
1½	3500	143T	13½	13⅜	5⅛	4⅝	2⅞	7	8	26	6⅞	3⅛	22⅜	2⅝	1	3¾	98
2	3500	145T	13½	14¼	5⅛	4⅝	2⅞	7	8	26	6⅞	3⅛	22⅜	2⅝	1	3¾	105
3	3500	182T	13½	16⅝	7	4⅝	2⅞	7	10	26	7¼	3¾	24	2¾	⅞	3¾	129
5	3500	184T	13½	18⅞	7	4⅝	2⅞	7	10	26	7¼	3¾	24	2¾	⅞	3¾	178

3500 RPM



Customer _____
Pump _____

Service _____ GPM
_____ TDH _____ EFF%
Impeller Dia. _____

Certified for: _____
By: _____
Date: _____

1750 RPM

